

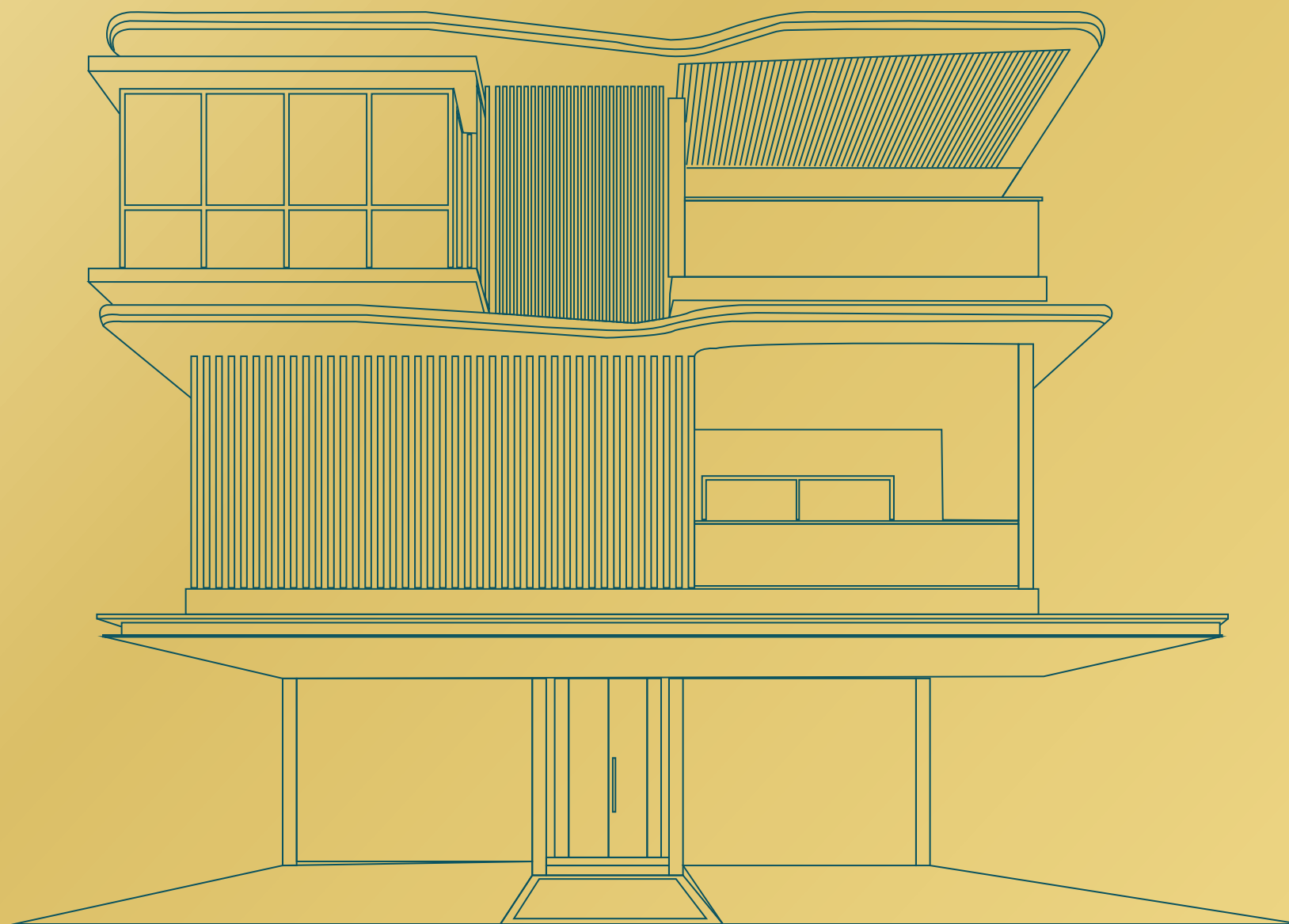
sage

by RAGHAVA

sage
by RAGHAVA

The Address of Distinction

Enter a World of Refined Living



Sage By Raghava is more than a villa.
It is a destination where elegance and
comfort intertwine. In a world of
ordinary living, here lies an address
that is extraordinary.

The address for a select few!

sage
by RAGHAVA

An Iconic Passage to Prestige!



A spectacle that becomes a testament to your success





Your Residence, Your Address
Meticulously planned
to the T

20.86 Acres

169 Villas

335 – 400 Sq. yd



An Address
That embodies
luxury living





An address
that becomes your
Private sanctuary

Luxuriously crafted residences offering
unparalleled privacy and serene living spaces.

Floors

G +  + 

Car Parking



Bedroom



2 Rooms for Domestic Help

Swimming Pool

Floor Plans



Ground Floor



1st Floor



2nd Floor



335 SQ. YD.

East Facing



Ground Floor



1st Floor



2nd Floor



335 SQ. YD.

→ West Facing

Ground Floor



1st Floor



2nd Floor





Ground Floor



1st Floor



2nd Floor



400 SQ. YD.

West Facing

The image shows a sophisticated indoor pool environment. On the left, a large wall is covered in a grey, textured pattern of overlapping circles. Below this wall is a planter box filled with various green plants. A swimming pool with clear blue water occupies the center of the space. To the right of the pool is a wooden deck. On the deck, there is a modern lounge chair with a grey cushion and a dark, vertically-slatted frame. In the background, there are large windows and glass doors that provide a view of the outdoors. The ceiling is a smooth, dark grey with recessed lighting.

Refresh, Relax, Rejuvenate in Private

Discover an oasis that is entirely your own
Unwind in complete privacy with an
exclusive indoor pool meticulously
designed for your to relax in solitude



Living Area

A welcoming space to
gather with friends and family

Bedroom

Comfortable sleeping experience with
high-end furnishings and
a serene atmosphere for restful nights.

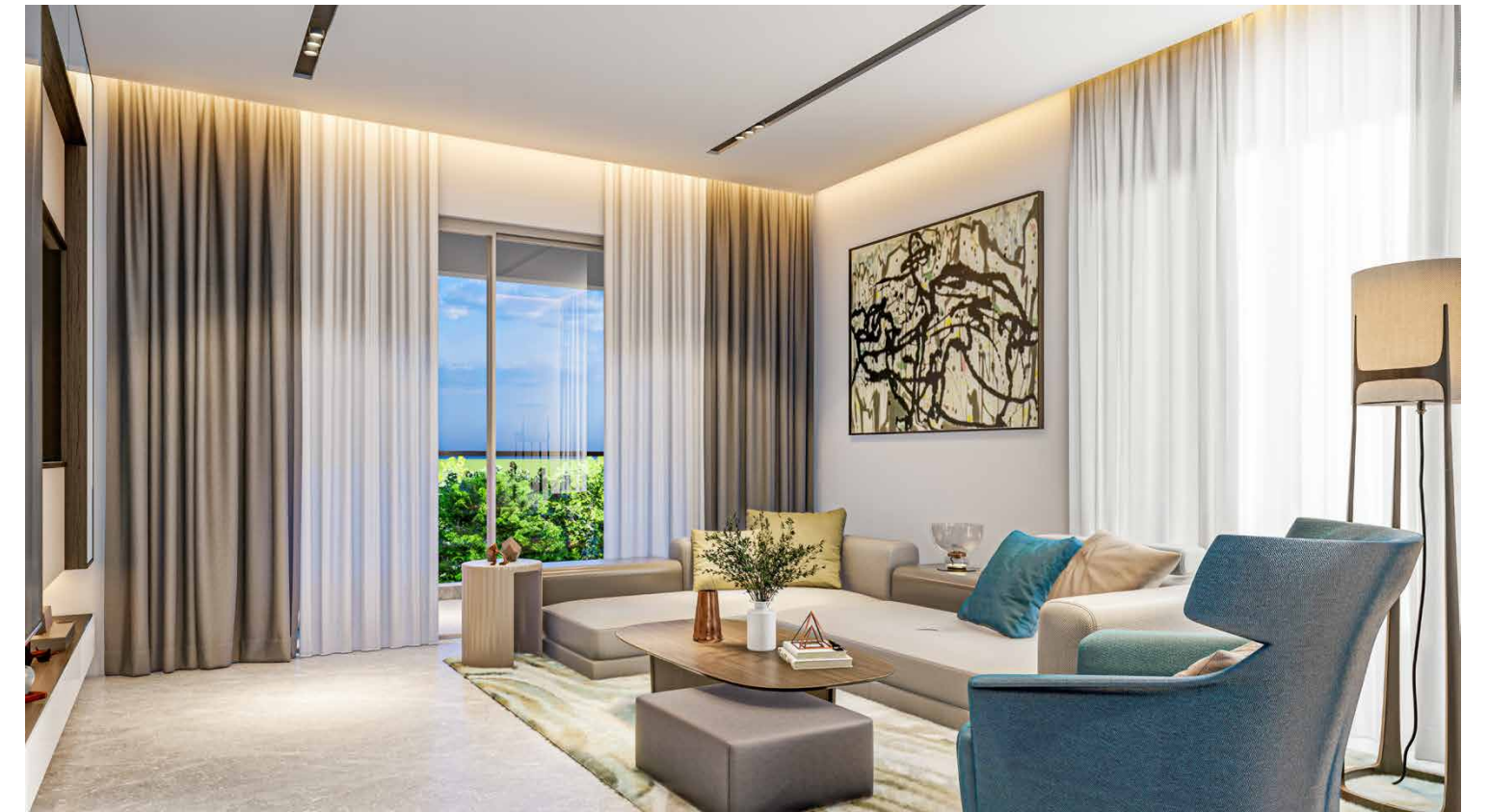


Elevate your feasting experience in an opulent dinner hall



A welcoming space to gather with friends and family

Spacious Living Atrium



Intricately designed to offer you maximum comfort





A beautifully designed space where comfort meets style, offering a perfect backdrop for everyday living and entertaining

Mesmerise your
guests with plush,
bespoke spaces



Say hello to the opulent life in luxurious bedrooms, including a master suite with a private balcony and ample storage space with walk-in closets



Where unmatched luxury meets
Unparalleled amenities

28,500 sq. ft. of luxury at The Clubhouse

Experience best-in-class amenities with a sprawling
swimming pool, plush indoor game rooms, a
bowling alley, salon and an outdoor cafe





Unwind in a world full of
extraordinary surprises

Welcome to the
Epicenter of
Elegance

Sage
by RAGHAVA

CLUBHOUSE RECEPTION



Clubhouse (Ground Floor)



SWIMMING POOL



BANQUET HALL



CRECHE



PRE-FUNCTION AREA

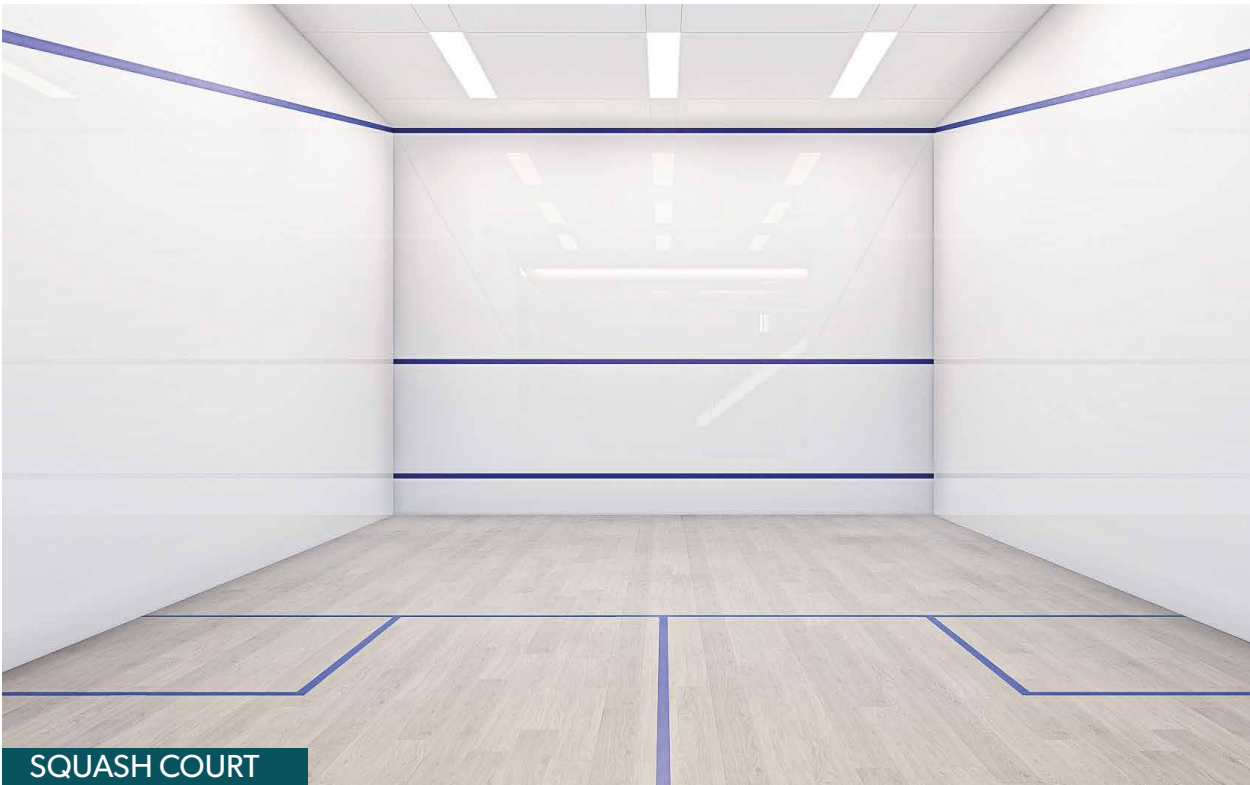
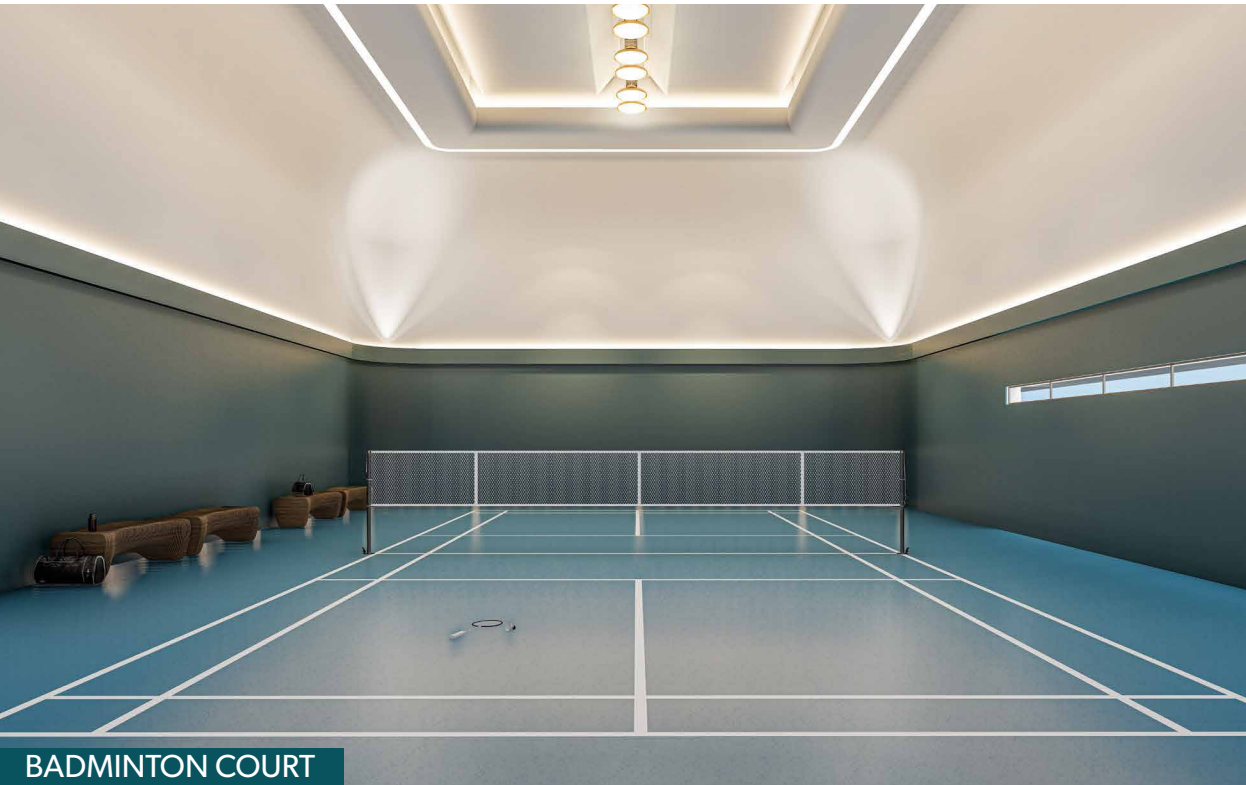
Entrust your little ones to expert care, host grand celebrations or rejuvenate with refreshing dips in the swimming pool

- Swimming Pool
- Creche
- Provisional Store
- Banquet Hall
- Pre - Function Area



Challenge fellow residents to a game of badminton or table tennis, or relax amidst nature's embrace at our tranquil outdoor cafe

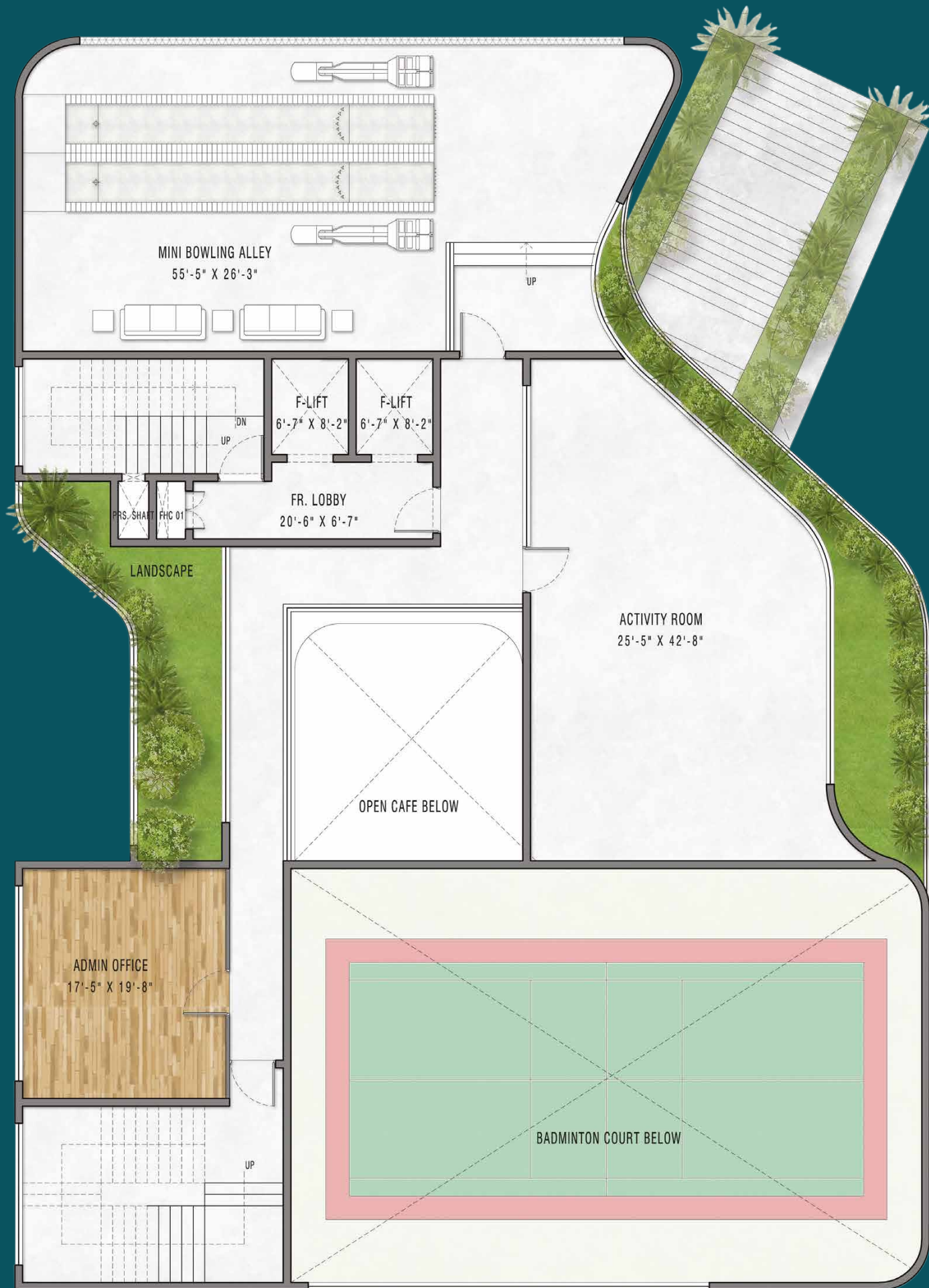
- Indoor Games
- Badminton Court
- Outdoor Cafe



Clubhouse (1st Floor)



Clubhouse (2nd Floor)



Show off your skills at our mini bowling alley or get creative with your little ones in our activity room

- 🏹 Mini Bowling Alley
- 🏹 Activity Room





YOGA DECK



GENTLEMAN'S LOUNGE



GYM

From pampering spa sessions to invigorating workouts, you can take your pick from a range of wellness amenities to replenish your mind, body and soul

- ♣ Spa
- ♣ Gentleman's Lounge
- ♣ Yoga Deck
- ♣ Gym
- ♣ Salon

Clubhouse (3rd Floor)



Clubhouse (Terrace Floor)



Catch the latest movies in our open-air theater, or savor handcrafted cocktails at our stylish bar terrace bar

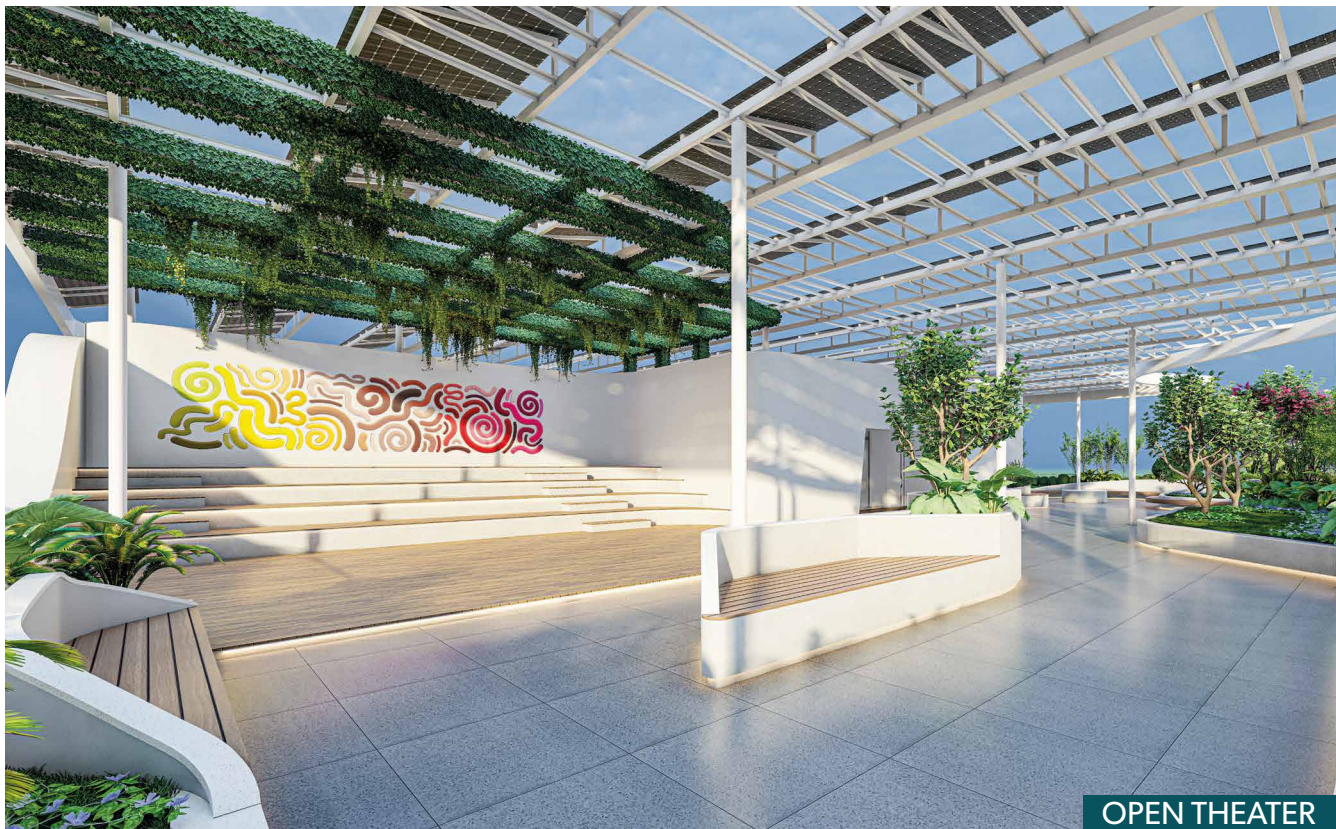
- Seating Area
- Open Theater
- Bar



BAR



SEATING AREA



OPEN THEATER

An aerial, high-angle view of a modern residential development at dusk. The scene is filled with numerous multi-story apartment buildings, many of which have rooftop terraces with outdoor furniture and umbrellas. A large, rectangular swimming pool with a blue interior is a central feature, surrounded by a paved deck and lounge chairs. Adjacent to the pool is a green lawn area where a group of people is gathered, some sitting at tables. The buildings are illuminated from within, and the sky is a deep twilight blue. The overall atmosphere is one of sophisticated urban living.

Experience
grandeur and
luxury at
every corner



SOCIAL PLAZA



MINI SOCCER FIELD



OUTDOOR AREA

Live the
active lifestyle

Kick back with a game of football or
put on your running shoes for a
stroll around the beautifully curated
outdoor spaces.



PARTY LAWN



A world of wonder awaits our youngest residents

A beautifully constructed elevated walkway built around the dedicated children's play area offers the perfect space for both you as well your children to kick back, relax and have some fun



SPECIFICATIONS



FOUNDATION & STRUCTURAL FRAME

- RCC foundation & RCC framed structure.



SUPERSTRUCTURE

- RCC Framed structure with earthquake resistant foundation.
- Solid cement concrete blocks for both internal and external walls.



PLASTERING INTERNAL & EXTERNAL

- Internal & External Walls: Double coat cement plaster with smooth finish.



JOINERY WORKS

- MAIN DOOR
 - Main Door: Factory made solid/engineered wood frame, solid core shutter with teak veneer on both sides, finished with PU coat.
 - Designer hardware with smart lock.
- INTERNAL DOORS
 - Factory made solid/engineered wood frame, solid core shutter 8' ft height with veneer on both sides with PU coat.
- TOILET DOORS
 - Factory made solid/engineered wood frame, solid core shutter 8' ft with veneer on one side finished with PU coat and PU paint finish with laminate finish on the other.
- HARDWARE
 - Hardware of reputed make.
- UTILITY DOOR
 - Aluminum doors as per design.



PAINTING

- EXTERNAL - Textured/smooth finish & two coats of exterior emulsion paint with exterior cladding as per architectural features.
- INTERNAL – Smooth putty finish with 2 Coats of acrylic emulsion paint.



FLOORING and CLADDING

- MAIN FLOORING
- DRAWING & LIVING ROOM
 - Imported marble flooring/skirting as per design.
- LOBBY, HOME THEATER & DINING
 - Glazed vitrified tile flooring/skirting as per design.
- ALL BEDROOMS, WALK INS, POOJA ROOM & KITCHEN
 - Glazed vitrified tile flooring/skirting as per design.
- BALCONY & SIT OUTS
 - Vitrified tiles in wooden matte finish as per design.
- TOILETS & UTILITY FLOORING
 - Anti-skid ceramic tiles.

- TOILETS & UTILITY DADOING
 - Glazed ceramic tiles for toilet wall dado up to false ceiling as per design.
 - Ceramic tile dado for the utility.
- STAIRCASE
 - Granite flooring with SS steel handrail.
- PARKING AND DRIVEWAY
 - Rough finished granite/pavers as per architects' intent.
- SWIMMING POOL DECK
 - Wooden finish vitrified tiles.



HAND RAILING

- Balcony: Glass railing as per the design intent.



KITCHEN/ UTILITY

- WATER CONNECTIONS – Treated water supply with water meters. Provision for fixing RO system.
- EXHAUSTS - Provision for chimney.
- UTILITY/WASH - Washing machine/dishwasher provision.



CP AND SANITARY

- Wash Basin with granite countertop
- Wall mounted WCs in all bathrooms
- 3-way diverter in master bedroom (Shower, Spout & Hand Shower)
- Single Lever Tap and Shower Mixer in other toilets (Shower & Spout)
- All CP and sanitary fixtures of reputed brand
- Heat pump provision.
- Internal distribution lines in the villa to be closed with box type encloser.
- 1000 litres PVC tank to be provided at terrace only for the backup.



INTERNET / CABLE TV / TELECOM

- Provision for internet / television / intercom.



LIFTS

- Provision for lifts



WATER SUPPLY SYSTEM / SEWAGE TREATMENT PLANT

- WTP: Treated water to be made available through exclusive water softening for domestic purpose in all units with water meters (Pneumatic System).
- STP: A sewage treatment plant of adequate capacity as per norms to be provided inside the project. Treated sewage water to be used for the landscaping & flushing.
- MUNICIPAL WATER: Municipal water points to be provided to all units with water meters.



GENERATOR POWER BACK UP

- 100% DG set back up prepaid energy meter for DG power & EB power billing system.



SECURITY / BMS

- Security cabins at all entrances and exits with peripheral CCTV coverage.
- CCTV at vantage points - Project entry/exit, sports areas, clubhouse entry/exit, clubhouse areas in parking as per consultant recommendation.
- Access Control System (provision) for clubhouse, main entry/exit passages.
- Boom barriers proposed.
- BMS for electrical, gas & water consumption with prepaid meters to be provided (centralized billing).



PARKING MANAGEMENT

- Dedicated 3 car parking.
- One EV charging point provision for each villa.



ROADS

- 40 feet wide BT finish with landscape intent.



ELECTRICAL

- Cables concealed copper wiring. (Havells / Polycab / RR cable or equivalent)
- Modular switches for other services. (Brand: Schneider / Legrand or equivalent)
- LED light fixtures for all common areas & landscape area lighting.
- 3 phase supply for each unit and prepaid energy meters.
- Miniature circuit breakers (MCB) for each distribution board. (Brand: Schneider / Legrand / ABB or equivalent)
- Power outlets for air conditioners in drawing, living and all bedrooms.
- Power points for refrigerators, dishwasher, geysers and cooking appliances




HOME AUTOMATION

- Wired smart home automation with smart assistant to help with lighting control to be provided to all units. (Brand: Hager, Schneider, Lutron or equivalent)
- Smart intelligent video door phone to be provided. (Brand: Yale, Samsung or equivalent)



SWIMMING POOL

- Individual pool for each villa.



Enter
your
home in
style

Everything you ever need... Just a drive away

Business / IT Institutions

- Google - 22 mins
- Amazon - 23 mins
- Wipro - 23 mins
- Infosys - 23 mins
- Accenture - 25 mins
- Microsoft - 25 mins

Education Institutions

- Delhi Public School - 5 mins
- Birla Open Minds School - 5 mins
- Samasthi International School - 10 mins
- ICFAI Business School - 10 mins
- Rockwell International - 15 mins

Hotels

- Golkonda Resorts & Spa - 15 mins
- Hyatt Gachibowii - 20 mins
- Sheraton Hyderabad - 20 mins
- Ockwood Hotel - 20 mins
- Radisson Hotel - 30 mins

Healthcare Facilities

- Continental Hospital - 18 mins
- Sunshine Hospital - 22 mins
- AIG Hospital - 25 mins

Entertainment & Shopping

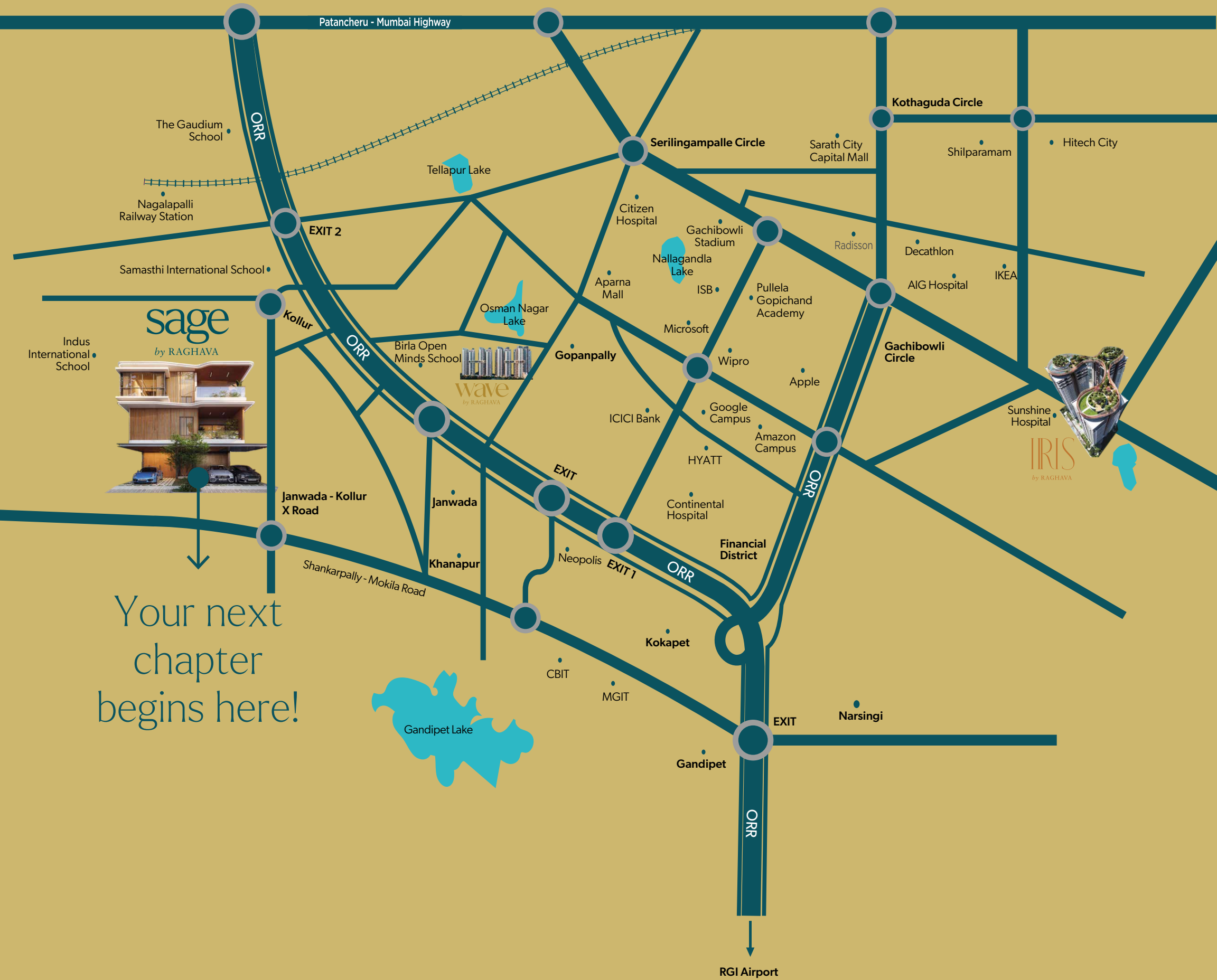
- Skyzone - 10 mins
- Gandipet Lake - 10 mins
- Sarath City Capital Mall - 30 mins

Public Transport

- ORR - 10 mins
- RGIA Airport - 43 mins

Important Nearby Locations

- Kollur SEZ - 5 mins
- Neopolis - 9 mins
- Kokapet SEZ - 15 mins
- US Consulate - 17 mins
- Financial District - 20 mins
- Wave Rock - 21 mins



Your next
chapter
begins here!

About Raghava

Raghava is the frontrunner in the realm of real estate in Hyderabad, redefining the standard of living with our premium residential projects. With a strong focus on architectural innovation and a commitment to providing exceptional living experiences, we're setting new benchmarks in the industry with two groundbreaking projects underway: IRIS and WAVE.



Our pilot project, IRIS, is an extraordinary architectural marvel nestled amidst the bustling city of Hyderabad. The ultra luxury project houses premium apartments, best-in-class amenities and a magnificent 1,00,000 sq. ft. Sky Island which connects the three towers at the top.



Wave by Raghava, is yet another testament to luxury living coupling premium apartments with high-end facilities. The project's crowning glory, the Sky Bridge, is a suspended platform on the 19th floor connecting the towers offering unparalleled panoramic views of the city.



Project Partners

Architect

FHD
INDIA

Structure &
MEP Consultant

ENNOVATIVE
DESIGN CONSULTANTS
OUR DESIGN FOR YOUR BUILD

Landscape
Architects

ELEMENTS
LANDSCAPE ARCHITECTURE • URBAN DESIGN • PLANNING

TSRERA No. P01100008686

Site Address:

Sy.No. 267, 268 & 271, Kollur Village, Ramachandrapuram Mandal,
Sanga Reddy District, Telangana - 502300.

Office Address

VENTURA ESTATE DEVELOPERS - RAGHAVA

4th Floor, G-Square Building, Beside Raidurgam Police Station, Serilingampally, Hyderabad.

sage
by RAGHAVA

☎ +91 9289 21 21 21 ✉ sales@raghava.world 🌐 www.sagebyraghava.world • www.raghava.world

DISCLAIMER: All dimensions are in Square Feet, and measured from finish to finish excluding construction tolerances. All materials, dimensions, and drawings are approximate only. Information is subject to change without notice, at developer's absolute discretion. Actual area may vary from the stated area. All images used are for illustrative purposes only and do not represent the actual size, features, specifications, fittings, and furnishings. The developer reserves the right to make revisions/alterations, at it's absolute discretion, without any liability whatsoever.