

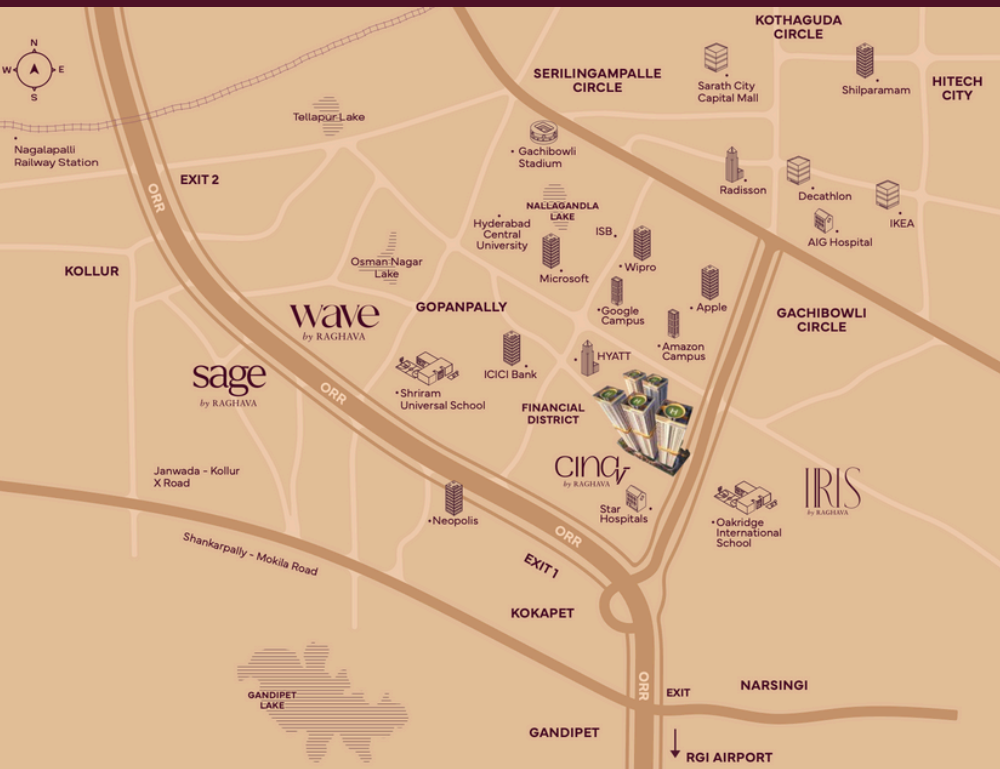
A Life in
cinema



RAGHAVA



LOCATION



The site plan for the Cingra project features four towers arranged around a central lake and landscaped area. Each tower contains multiple units with specific area and configuration details:

- TOWER-01:**
 - UNIT A, 2F: 4000-3000 SFT
 - UNIT B, 2F: 4000-3000 SFT
 - UNIT C, 1F: 4000-3000 SFT
 - UNIT D, 1F: 4000-3000 SFT
- TOWER-02:**
 - UNIT A, 2F: 4000-3000 SFT
 - UNIT B, 2F: 4000-3000 SFT
 - UNIT C, 1F: 4000-3000 SFT
 - UNIT D, 1F: 4000-3000 SFT
- TOWER-03:**
 - UNIT A, 2F: 4000-3000 SFT
 - UNIT B, 2F: 4000-3000 SFT
 - UNIT C, 1F: 4000-3000 SFT
 - UNIT D, 1F: 4000-3000 SFT
- TOWER-04:**
 - UNIT A, 2F: 4000-3000 SFT
 - UNIT B, 2F: 4000-3000 SFT
 - UNIT C, 1F: 4000-3000 SFT
 - UNIT D, 1F: 4000-3000 SFT

Additional features include a central lake, a basketball court, a 24.0 M wide road, and an entry/exit point. The plan also shows landscaping, walkways, and a parking area.

The site plan for the Cingra project features four towers arranged around a central lake and landscaped area. Each tower contains multiple units with specific area and configuration details:

- Tower-01:**
 - UNIT A, 2F: 4000-3000 SFT
 - UNIT B, 2F: 4000-3000 SFT
 - UNIT C, 1F: 4000-3000 SFT
 - UNIT D, 1F: 4000-3000 SFT
- Tower-02:**
 - UNIT A, 2F: 4000-3000 SFT
 - UNIT B, 2F: 4000-3000 SFT
 - UNIT C, 1F: 4000-3000 SFT
 - UNIT D, 1F: 4000-3000 SFT
- Tower-03:**
 - UNIT A, 2F: 4000-3000 SFT
 - UNIT B, 2F: 4000-3000 SFT
 - UNIT C, 1F: 4000-3000 SFT
 - UNIT D, 1F: 4000-3000 SFT
- Tower-04:**
 - UNIT A, 2F: 4000-3000 SFT
 - UNIT B, 2F: 4000-3000 SFT
 - UNIT C, 1F: 4000-3000 SFT
 - UNIT D, 1F: 4000-3000 SFT

The plan also includes a central lake, a playground, a 24.0 M wide road, and an entry/exit point. The overall design is modern and landscaped.

The site plan for the Cingra project features four towers arranged around a central lake and landscaped area. Each tower contains multiple units with specific area and configuration details:

- Tower-01:**
 - UNIT A, 2F: 4000-3000 SFT
 - UNIT B, 2F: 4000-3000 SFT
 - UNIT C, 1F: 4000-3000 SFT
 - UNIT D, 1F: 4000-3000 SFT
- Tower-02:**
 - UNIT A, 2F: 4000-3000 SFT
 - UNIT B, 2F: 4000-3000 SFT
 - UNIT C, 1F: 4000-3000 SFT
 - UNIT D, 1F: 4000-3000 SFT
- Tower-03:**
 - UNIT A, 2F: 4000-3000 SFT
 - UNIT B, 2F: 4000-3000 SFT
 - UNIT C, 1F: 4000-3000 SFT
 - UNIT D, 1F: 4000-3000 SFT
- Tower-04:**
 - UNIT A, 2F: 4000-3000 SFT
 - UNIT B, 2F: 4000-3000 SFT
 - UNIT C, 1F: 4000-3000 SFT
 - UNIT D, 1F: 4000-3000 SFT

The plan also includes a central lake, a playground, a 24.0 M wide road, and an entry/exit point. The overall design is modern and landscaped.

The site plan for the Cingra project features four towers arranged around a central lake and landscaped area. Each tower contains multiple units with specific area and configuration details:

- Tower-01:**
 - UNIT A, 2F: 4000-3000 SFT
 - UNIT B, 2F: 4000-3000 SFT
 - UNIT C, 1F: 4000-3000 SFT
 - UNIT D, 1F: 4000-3000 SFT
- Tower-02:**
 - UNIT A, 2F: 4000-3000 SFT
 - UNIT B, 2F: 4000-3000 SFT
 - UNIT C, 1F: 4000-3000 SFT
 - UNIT D, 1F: 4000-3000 SFT
- Tower-03:**
 - UNIT A, 2F: 4000-3000 SFT
 - UNIT B, 2F: 4000-3000 SFT
 - UNIT C, 1F: 4000-3000 SFT
 - UNIT D, 1F: 4000-3000 SFT
- Tower-04:**
 - UNIT A, 2F: 4000-3000 SFT
 - UNIT B, 2F: 4000-3000 SFT
 - UNIT C, 1F: 4000-3000 SFT
 - UNIT D, 1F: 4000-3000 SFT

The plan also includes a central lake, a playground, a 24.0 M wide road, and an entry/exit point. The overall design is modern and landscaped.

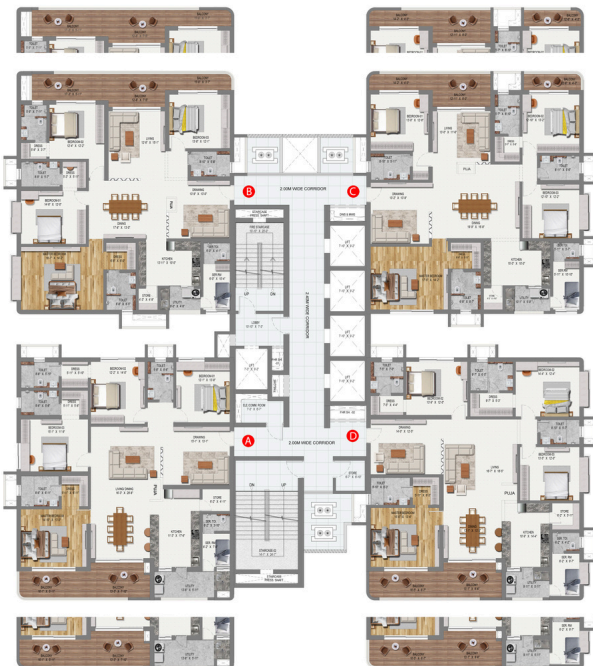


4BHK EF _ 3589 SFT

4BHK WF _ 3592 SFT

4BHK EF _ 3586 SFT

4BHK WF _ 3620 SFT





4BHK WF_ 3589 SFT

4BHK WF 3644 SFT

4BHK EF 3620 SFT



4BHK EF _ 3584 SFT

4BHK WF _ 3579 SFT

4BHK EF _ 3586 SFT

4BHK WF _ 3575 SFT



Introducing the OASIS



CLUB HOUSE

